

### laleggera armrest - 304

Chair with arms with solid wooden structure. Available in: natural maple, ash stained ebony, wenge, whitened oak, walnut veneer or matt lacquer. Oak veneer with coloured stains. Injected with expanding polyurethane foam.



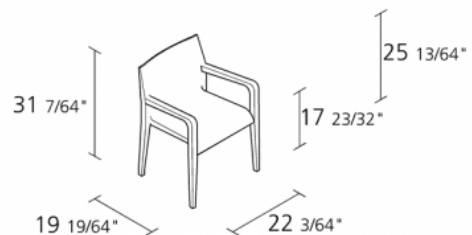
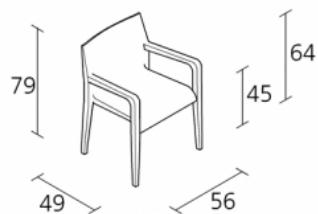
design  
Riccardo Blumer

The laleggera collection is the expression of research and technology at its maximum. The result of combining a solid traditional material, solid wood, with the lightest, expanded polyurethane, with a filled structure. The external shell in plywood or sliced veneer multi-laminate available with a transparent varnish finish or various lacquer colours. In 2009 it became part of the resident MoMA collection in New York.

The laleggera chair, awarded the "Compasso d'Oro" prize in 1998 is an iconic piece, displayed at the New York MoMA, at the Centre George Pompidou in Paris and at the Milan Triennale. A simple and essential symbol. This practical, resistant and stacking chair combines visual and structural lightness thanks to the material used to make the "gliders": wood injected with polyurethane foam.

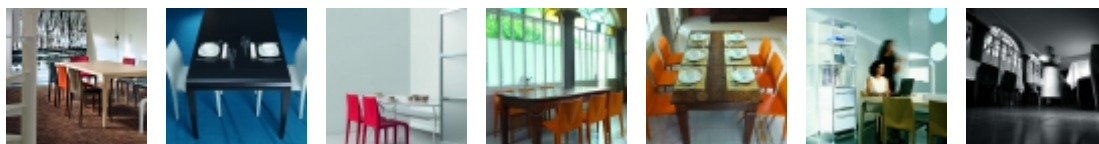
In addition to chairs, with and without arms, stools and benches add a different dimension to the concept of "lightness". The same material, the same finishes and the same pure lines are back in the new pieces, designed to be cosy, ergonomic and practical, offered with veneer in different type of wood, or in white matt lacquered or a variety of coloured stains.

### Dimension



Year warranty: 5 years  
 Production time: 4 weeks  
 Fire-retardancy  
 Boxes number: 1  
 Max.number pieces per a box: 1  
 Volume in m<sup>3</sup>: 0,274  
 Gross weight in Kg: 7,5

## Gallery

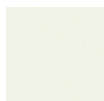


## References

Musei Civici Sinagoga

## Finiture

**matt lacquer**



**coloured stains**



**NOTE:** the RAL color finish may be selected by the customer, subject to an extra charge for under 25 units and with no extra charge for over 25. Feasibility to be approved with our firm.

## Certifications and Technical sheet

test	standard	date
arm static load test	UNI EN 1728/02 par.6.5	15/04/08
front legs static load test	UNI EN 1728/02 par.6.12	15/04/08
lateral legs static load test	UNI EN 1728/02 par.6.13	15/04/08
arm static load test	UNI EN 1728/02 par.6.6	15/04/08
combined seat and back fatigue test	UNI EN 1728/02 par.6.7	15/04/08
arm durability test	UNI EN 1728/02 par.6.10	15/04/08
fatigue test on the front edge of the seat	UNI EN 1728/02 par.6.8	15/04/08
seat impact test	UNI EN 1728/02 par.6.15	15/04/08
backrest impact test	UNI EN 1728/02 par.6.16	15/04/08
arm impact test	UNI EN 1728/02 par.6.17	15/04/08
stability test	UNI EN 1022/2005	15/04/08

De Projectinrichter

[www.deprojectinrichter.com](http://www.deprojectinrichter.com)  
088 - 650 12 34