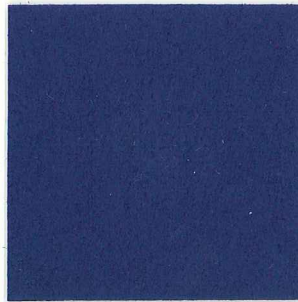


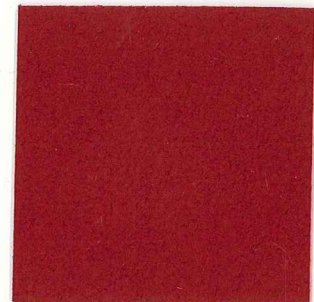
Microfaser/  
Microfibre



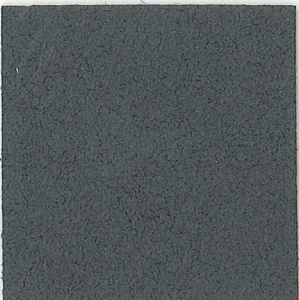
Schwarz/black



Royal-Blau/royal blue



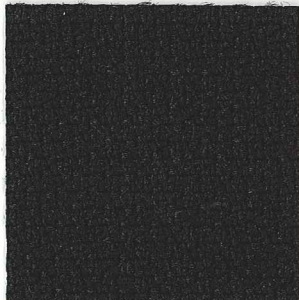
Ferraro-Rot/ferraro red



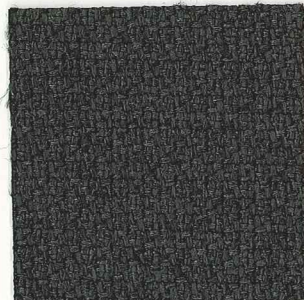
Smoke-Grau/smoke grey



Trevira CS



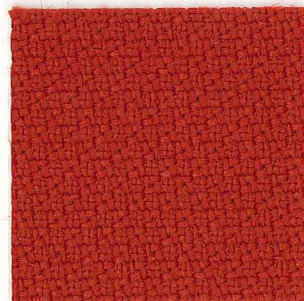
Black



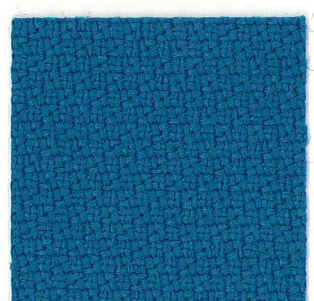
Grey Melange



Caramel



Coral



Aqua

PREMIUM  
Leder/Leather



Schwarz/black

<b>Microfaser Comfort/ Microfibre Comfort</b> by Gabriel:	DE	UK
Beschreibung/ Description	Hochwertige Marken-Microfaser mit hervorragenden Eigenschaften: samtig im Griff, atmungsaktiv, strapazierfähig, pflegeleicht.	High-quality branded microfibre fabric with outstanding properties: velvety touch, breathable, hard-wearing, easy to clean.
Material	88% Polyester/12% Polyurethan	88% Polyester/12% Polyurethane
Scheuerfestigkeit/ Abrasion resistance	Martindale 150.000	Martindale rubs 150.000

<b>Trevira CS step</b> by Gabriel	DE	UK
Beschreibung/ Description	Strapazierfähig, lichtecht, schwer entflammbar und nach Oeko-Tex 100 zertifiziert.	Hard wearing, colour fast to light, flame retardant and certified in compliance with Oeko-Tex 100.
Material	100% Trevira CS	100% Trevira CS
Scheuerfestigkeit/ Abrasion resistance	Martindale 100.000	Martindale rubs 100.000

<b>PREMIUM- Leder/Leather</b>	DE	UK
Beschreibung/ Description	Feinstes Marken-Leder: hochwertig, edel im Look, pflegeleicht, pflanzlich gefärbt, antistatisch.	Finest branded leather: high quality, stylish look, easy to clean, colours from natural vegetable dyes, antistatic.
Material	100% Leder	100% Leather

De Projectinrichter

www.deprojectinrichter.com  
088 - 650 12 34

**3Dee**  
Active Office Chair