

Plau 501

---

Gabriele e Oscar Buratti  
.12 - .14

De Projectinrichter 

[www.deprojectinrichter.com](http://www.deprojectinrichter.com)  
088 - 650 12 34

# Plau 501



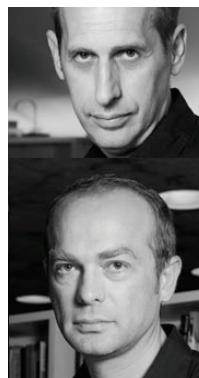
## INTRO

As can be expected of a company that indissolubly combines work and life, public and private, Tecno is continuing to explore and develop practical objects by extending a classic product's characteristics of transversality and flexibility to new versions.

Plau was designed by Gabriele and Oscar Buratti starting from a single surface, cut, folded and upholstered to form an armchair. The design is characterized by ease of use and a striking but elegant visual impact. It is also versatile enough to find uses in the home and in the work environment, in contract supplies, meeting areas, waiting rooms and lounges.

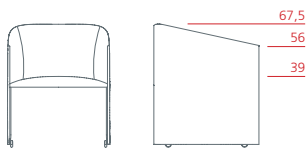
For 2014, Tecno is introducing new supports and new upholstery finishes for the Plau chair. With greater lightness in mind, a new version with a metal base has been created to complement the original design with its floor length sides. Two variants are available: with 4 cast spokes in polished or painted cast aluminum, with or without wheels, and with 4 legs in bent, chrome plated and painted metal.

## DESIGNER

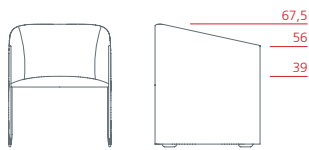


Gabriele e Oscar Buratti

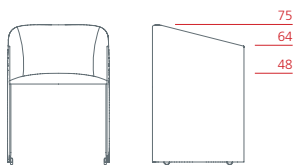
# Plau 501



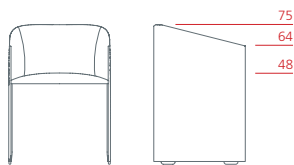
Lounge armchair on castors  
**1PL6021:** L 56 D 57,5 H 67,5



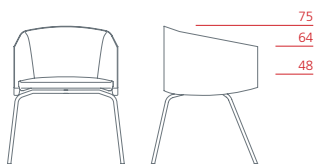
Lounge armchair on feet  
**1PL6022:** L 56 D 57,5 H 67,5



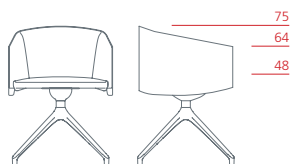
Tall armchair on castors  
**1PL6011:** L 56 D 50,5 H 75



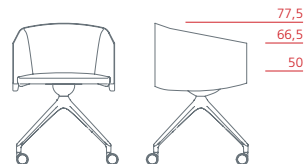
Tall armchair on feet  
**1PL6012:** L 56 D 50,5 H 75



Armchair on four legs  
**1PL6030:** L 65 D 58,5 H 75



4-star armchair on feet  
**1PL6042:** L 56 D 51,5 H 75



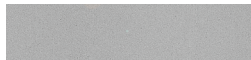
4-star armchair on castors  
**1PL6041:** L 56 D 51,5 H 77,5

# Plau 501

## BASE

---

1PL6030



CHROME



DARK GREY MATT PAINTED

1PL6042-41



POLISHED ALUMINIUM



DARK GREY MATT PAINTED



SAND MATT PAINTED

## UPHOLSTERY

---

See the following fabrics and leathers list

## Fabrics 1/4

### TC (Category 01)

---

CUSTOM

CUSTOMER OWN FABRIC

### LANI (Category 02)

---



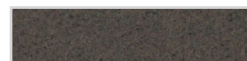
LIGHT GREY



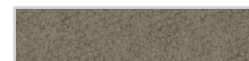
DARK GREY



BLACK



BROWN



OCHRE



MUSTARD



ORANGE



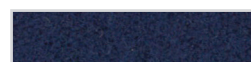
LIGHT RED



DARK RED



LIGHT BLUE



DARK BLUE



POWDER BLUE

# Fabrics 2/4

## FIELD (Category 02)

---



BLACK - WHITE



GREEN GREY



BLACK



CHALK



SAND



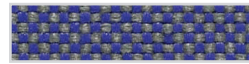
YELLOW



RED



PURPLE



BLUE PURPLE



PETROLEUM BLUE



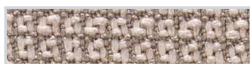
LIGHT GREEN



KIWI GREEN

## METRIC (Category 02)

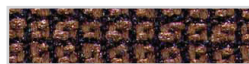
---



GREEN GREY



SAND



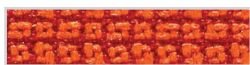
BROWN



MAGENTA



RED



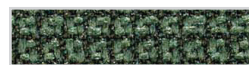
ORANGE



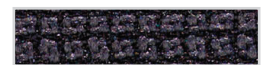
YELLOW



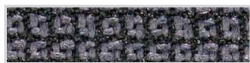
GREEN



OLIVE GREEN



BLACK - GREY



DARK GREY



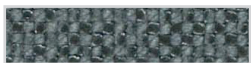
CLASSIC BLUE

## HOT (Category 02)

---



WHITE



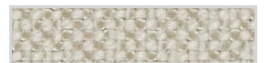
DARK GREY



BLACK



CREME



SAND



BROWN



YELLOW



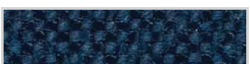
OCBRE YELLOW



ORANGE



PURPLE



CLASSIC BLUE



OLIVE GREEN

# Fabrics 3/4

## REMIX (Category 02)

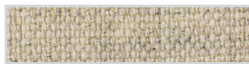
---



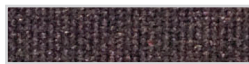
LIGHT GREY



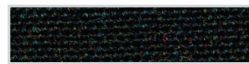
GREY



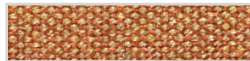
SAND



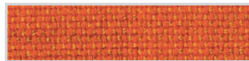
BURGUNDY



COFFE



EARTH



ORANGE



BLUE SKY



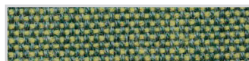
PETROLEUM BLUE



AQUAMARINE



LIGHT GREEN



GREEN

## STEELCUT TRIO (Category 03)

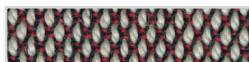
---



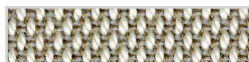
WHITE - BLACK



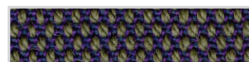
WHITE - GREY



WHITE - RED



BEIGE



BROWN - PURPLE



OCHRE YELLOW



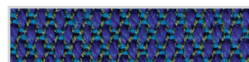
ORANGE



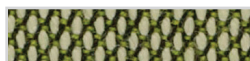
MAGENTA



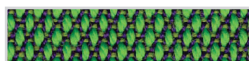
ICE



PURPLE - TURQUOIS



GREEN - WHITE



GREEN - PURPLE

## STEELCUT 2 (Category 03)

---



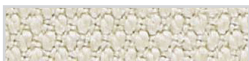
CREME



GREEN GREY



BLACK



KHAKI



BROWN



YELLOW



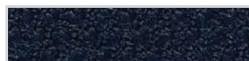
ORANGE



RED



AUBERGINE



CLASSIC BLUE



LAWN GREEN



OLIVE GREEN



# Fabrics 4/4

## DIVINA (Category 03)

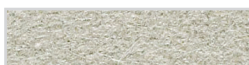
---



CHALK



BLACK



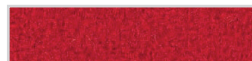
SAND



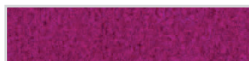
YELLOW



ORANGE



RED



MAGENTA



PURPLE



ELETTRIC BLUE



CLASSIC BLUE



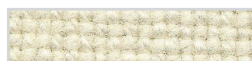
LIGHT GREEN



KIWI GREEN

## HALLINGDAL (Category 03)

---



CREME



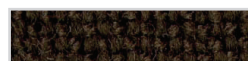
GREY



BLACK - GREY



BROWN - GREY



BROWN



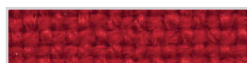
OCHRE YELLOW



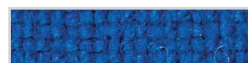
ORANGE



ORANGE - MARS



RED



ELETTRIC BLUE



PURPLE

# Leather

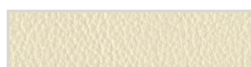
## LEATHER (Category 04)



WHITE



CHALK



CREME



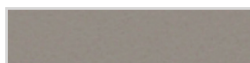
SAND



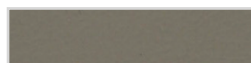
SAHANA



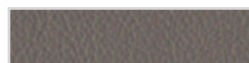
KHAKI



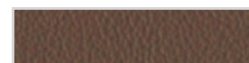
HEMP



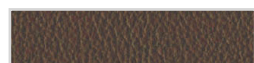
BRACCO



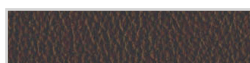
GREY



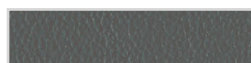
COCOA



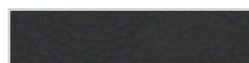
BLACK TEA



COFFEE



DARK GREY



SLATE GREY



BLACK



MIDNIGHT BLUE



BLUE



DARK GREEN



OLIVE



AVOCADO



CREAM



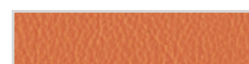
OCHRE YELLOW



MANGO



GRAPEFRUIT



ORANGE



RED



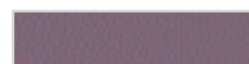
CRIMSON



DARK RED



BLACKBERRY



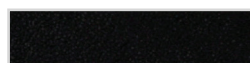
MAUVE

# Hide

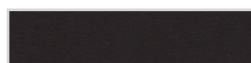
## HIDE (Category 08)



DOVE-GREY



BLACK



DARK BROWN