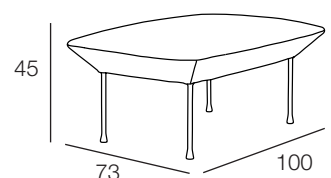
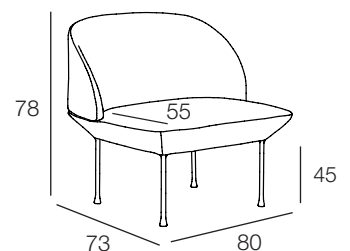
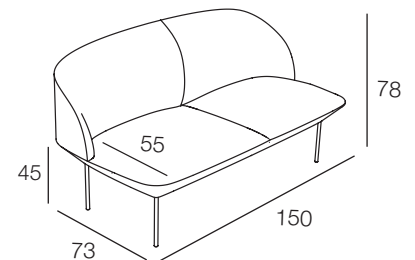
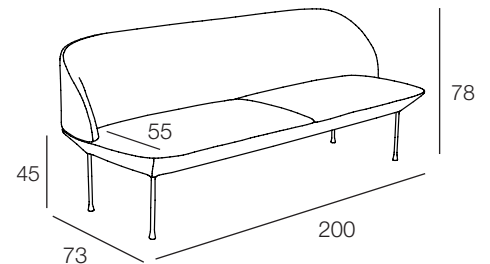


PRODUCT FACT SHEET

OSLO SOFA FURNITURE / LIGHTING / ACCESSORIES

Anderssen & Voll on the design "We wanted to make a sofa series with a light and inviting appearance, without compromising on comfort. The horizontal division in the seat is important, as it allowed us to add extra comfort in the lower part of the furniture while maintaining an airy overall expression. The Oslo sofa series is crafted on the west coast of Norway and with its embracing and rounded softness it stands as a natural extension to the Nordic touch and friendliness that characterises the designs of Muuto."

| | |
|------------------------------|---|
| PROCESS | Produced in Norway and upholstered in Denmark. The shell is made from casted foam. |
| DESIGNED BY / YEAR OF DESIGN | Anderssen & Voll / 2013 |
| TYPE | 3 seater sofa, 2 seater sofa, chair & pouf |
| DESCRIPTION | The Oslo series consists of a 3-seater sofa, a 2-seater sofa, a chair and a pouf, all with build in pillows, and works well both in a home setting, in a reception, in a lounge area, or in a hotel lobby. |
| ENVIRONMENT | Indoor |
| DIMENSIONS (CM) | 3 Seater: L: 200 / SH: 45 / D: 73 / Total H: 78 / SD: 55 2 Seater: L: 150 / SH: 45 / D: 73 / Total H: 78 / SD: 55 Chair: L: 80 / SH: 45 / D: 73 / Total H: 78 / SD: 55 Pouf: L 100 cm, D 73 cm, H 45 cm |
| MATERIAL | Inner frame of steel, Nozag springs, legs of steel with powder coated surface and fabric from Kvadrat. |
| STANDARD TEXTILES | See page 2 for colour options. Other fabric types for projects available on requests. |
| CLEANING INSTRUCTIONS | See kvadrat.dk for the cleaning and maintenance instructions for your chosen textile. |
| TESTS & CERTIFICATIONS | Danish Technological Institute - EN 16139:2013. The Oslo 3-seater sofa has been tested to withstand L1: General use. Tested to withstand use in both short and longer periods of time, as well as use with both light and heavy loads on the furniture. i.e Office buildings, educational institutions, showrooms, restaurants & public areas. |
| ABOUT THE DESIGNER | Anderssen & Voll are two thirds of the former Norway Says and among the most prominent and successful Norwegian designers. They have formerly been named both Norwegian and Scandinavian designers of the year in Norway and have received International awards and recognition for their work with furniture, lighting and home accessories. |

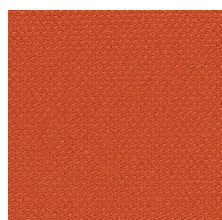


PRODUCT FACT SHEET

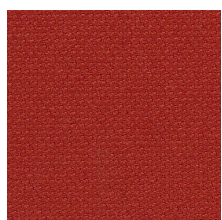
OSLO SOFA
FURNITURE / LIGHTING / ACCESSORIES

IN STOCK TEXTILES OF THE OSLO SOFA SERIES

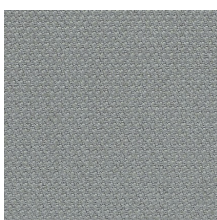
SHELL



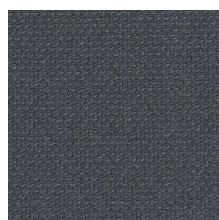
Steelcut 550



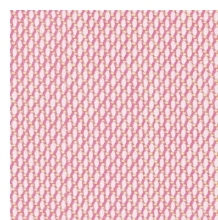
Steelcut 660



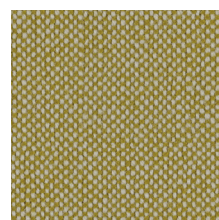
Steelcut 160



Steelcut 180



Steelcut trio 515



Hallingdal 407

LEGS



Tangerine



Red



Grey



Dark grey



Red



Yellow



Other Steelcut colours are available at a 5% extra cost. Other fabric types for projects, available upon request.

De Projectinrichter

www.deprojectinrichter.com
088 - 650 12 34

MUUTO
New Nordic