

**Patricia Urquiola**

Curtain and Upholstery collection 2013

De Projectinrichter

[www.deprojectinrichter.com](http://www.deprojectinrichter.com)

088 - 650 12 34



**kvadrat**



# Patricia Urquiola

## Curtain and Upholstery collection 2013

Acclaimed designer Patricia Urquiola has created her first collection for Kvadrat. This consists of several abstract designs, which combine sophisticated colours, tactility and a strong sense of depth and volume: *Grid 1+2*, *Matrix*, *Memory*, *Drops* and *Winding*.

The collection comprises curtains and upholstery textiles that are characterised by abstract patterns, creating a perception of irregularities. The designs' inherent 'randomness' combines with a certain order and continuity within the process of textile production. These themes refer to a fluid and connected universe.

*Grid 1+2*, *Matrix* and *Memory* all feature a 'digital' look and come in complementary colours. Except for *Memory*, they offer a unique play of seemingly random shapes, made from smaller elements, which are arranged on a grid. These are all in a contrasting colour to the background. *Grid 1+2* and *Memory* are upholstery textiles while *Matrix* can be used both as an upholstery fabric, as well as a curtain.

*Memory* is related to the other upholstery fabrics in terms of its colour palette and dissolved structure. However, as the textile has an atomised, highly irregular look, it is the only one in the collection not to feature distinctive shapes or stripes.

The other two designs in the collection, the curtains *Drops* and *Winding*, are characterised by their airiness. Both feature coloured stripes, which stand out on top of a transparent background. These run from selvedge to selvedge.

Thanks to their individuality and lively expressions, the textiles in the Urquiola collection are ideal for hospitality venues and private homes.

Patricia Urquiola was born in Oviedo, Spain and now lives and works in Milan. She attended the School of Architecture of Madrid Polytechnic and Milan Polytechnic where she graduated in 1989 with Achille Castiglioni.

In 2001 she opened her own office in Milan, working on product design, architecture, installations and concept creation. Since then, she has worked with some of the most renowned firms like Alessi, Andreu World, B&B Italia, BMW, Kartell, Flos, Molteni, Moroso and Rosenthal.

She has won several international prizes and awards. Amongst others the Medalla de Oro al Mérito en las Bellas Artes (Gold Medal of Fine Arts) awarded by the Spanish Government. Furthermore, she was awarded as Designer of the Year by the magazines Wallpaper and Elle Deco, and Designer of the Decennium 2000 – 2010 by the German magazines H.O.M.E. and Häuser. Among others, she received the Red Dot Award and the Chicago Athenaeum Good Design Awards. Exhibitions on her work have been shown all over the world.

For further information please contact  
[press@kvadrat.dk](mailto:press@kvadrat.dk)

[www.kvadrat.dk](http://www.kvadrat.dk)



### **Grid 1+2**

90% new wool, 10% nylon  
140 cm wide  
20 colours, 10 colours each

Upholstery fabrics *Grid 1+2* are made from new wool, which is soft, smooth and has an elegant lustre. This adds a classical dimension to the look of the textiles which, combined with their contemporary patterns and distinctive colours, creates an intriguingly 'edgy' look.

The patterns of the textiles are related: *Grid 1* is based only on a grid while *Grid 2* contains a digital motif inserted within the grid. They comprise different shapes, which are in a contrasting colour to the background. These emerge in an irregular way from the fabric.

Whereas the pattern for *Grid 1* is more structured and consistent, with more regular blocks and shapes, the pattern for *Grid 2* seems more complex and variable.

The 20 colourways of *Grid 1+2* combine understated hues, such as cream, with bright hues, such as orange. Whilst the textiles do not share colours, the colourways complement each other very well.



### **Matrix**

100% Trevira CS  
140 cm wide  
24 colours

Jacquard woven *Matrix* is a piece-dyed velour textile, which can be used as an upholstery fabric as well as a curtain. It features a detailed, dense pattern, created by combining a lighter and darker shade of a colour. The textile's pattern is reminiscent of the detailing on a computer motherboard.

*Matrix*'s soft, smooth surface creates an elegant play of light and dark colour shades. The versatile colour scale for *Matrix* consists of 24 colours. It includes warm tones, such as deep orange and burgundy, as well as cooler notes, like olive green and pale grey.



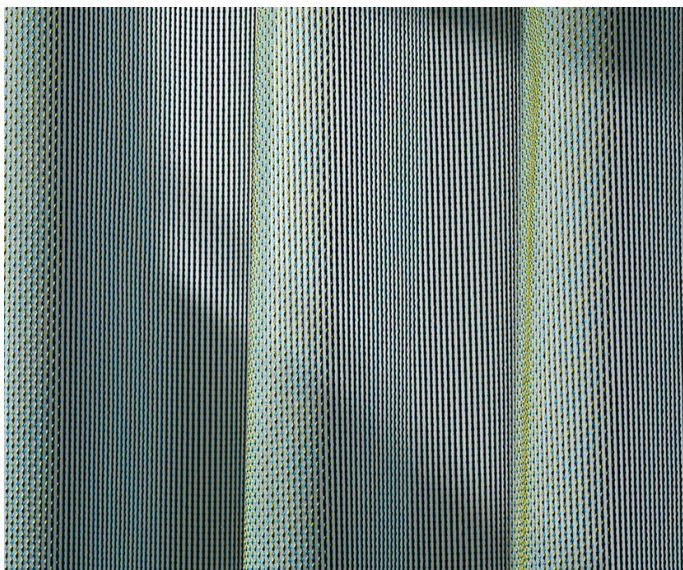


### Memory

100% Trevira CS  
150 cm wide  
19 colours

Upholstery textile *Memory* has a particularly tactile, resilient and irregular expression. It is constructed with bouclé yarns that play across its surface. In the areas where these yarns are less dense, the background layer of the fabric, which is in a contrasting colour, emerges. The subtle irregularities in the surface remind of a beautifully aged material.

*Memory* comes in 19 colourways comprised of natural hues, such as cream, aubergine and sand, as well as a few accent colours, like rich red.



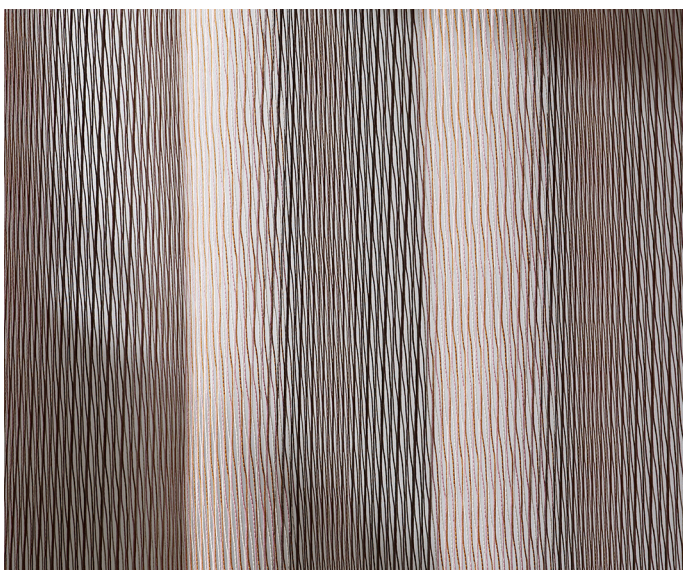
### Drops

100% Trevira CS  
310 cm wide  
8 colours

*Drops* is a curtain that particularly stands out for its tactility and elegant interplay of colours. It features a double yarn intertwined in a looped manner and set against a white, grey or black transparent background. Woven drops slightly protrude from the surface of the stripes, and appear to 'flow' over the textile.

The colourways for *Drops* include understated, natural tones, such as pale grey, aubergine and earth brown, as well as more luminous tones, such as yellow and pink.

When the curtain is draped, or viewed from different angles, these different colour-settings combine to create a variety of subtle yet striking nuances. The colour of the background also appears to change depending on the way the stripes combine colours.



### Winding

100% Trevira CS  
330 cm wide  
6 colours

Like *Drops*, *Winding* is a curtain that combines exceptional tactility with sophisticated colour combinations. It features three differently coloured stripes that gently bend towards and away from each other. These are set against a white or black transparent background and slightly stick out from the surface of textile.

The colour-scale for *Winding*, like that of *Drops*, consists mainly of graceful, natural tones but also includes some rainbow hues.

Like *Drops*, when *Winding* is draped, or seen from a new perspective, it reveals an elegant play of colour nuances. The result conveys a high sense of diversity and tactile wealth.