

ADD SOFT

Francesco Rota | 2018

www.deprojectinrichter.com
088 - 650 12 34



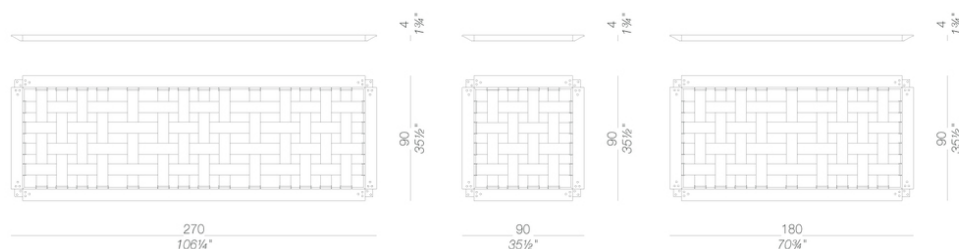
ADD SOFT

Francesco Rota | 2018

The modular ADD SOFT chair becomes softer and more generous. Its feet are shorter, allowing the frame to support comfortable high cushions that enhance the functionality of the design project. The result is a striking sofa that can be the protagonist in contexts with great character, without neglecting the original idea: a highly versatile modular system that offers countless options for configuration.



Lounge seat frames



Lounge seats

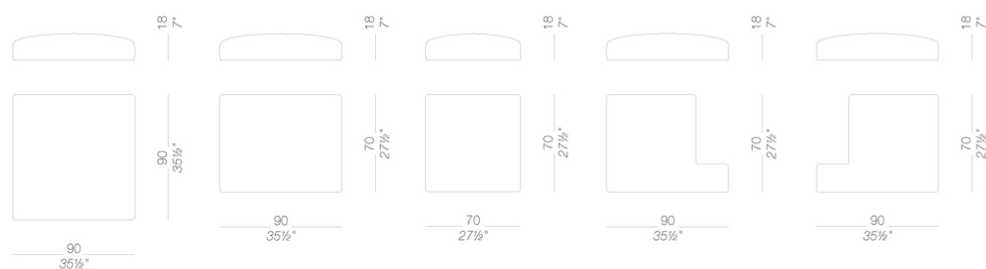
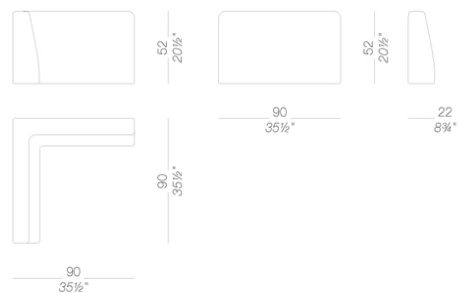


Table Top



Lounge backs



Armrest



Legs



ADD SOFT

Francesco Rota | 2018

Modular seating system with powder coated die-cast aluminium frame and webbed elastic support. Backrests and accessories can be fixed to the frame in several positions by using existing holes. Die-cast aluminium legs, one for corners and another to connect frames for larger configurations. Cushions and backrest in fire-retardant polyurethane foam with different density, upholstered with removable fabric. ADD is complemented by tops in various finishes, also with sockets. All metal parts are powder coated.

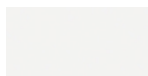
ADD SOFT

Francesco Rota | 2018

frame



powder coating
black
1 Colors



powder coating
white
1 Colors

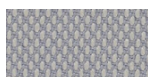
upholstery



fabric
Hallingdal 65
47 Colors



fabric
Canvas 2
40 Colors



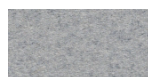
fabric
Steelcut Trio 3
48 Colors



fabric
Remix 2
24 Colors



fabric
Clara 2
24 Colors



fabric
Divina MD
24 Colors



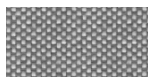
fabric
Divina Melange 2
24 Colors



fabric
Medley
37 Colors



fabric
Swing
24 Colors



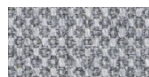
fabric
Maya
1 Colors



fabric
Jet
1 Colors



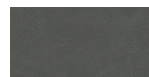
fabric
Laser J Flash
1 Colors



fabric
Fiord
24 Colors



fabric
Tonica 2
39 Colors



soft-leather
soft-leather
7 Colors

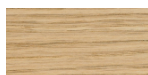


ecoleather
GRIMM FR
24 Colors

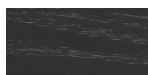
top



laminate
fenix 9/10
2 Colors



wood
blanch oak
1 Colors



wood
black open pore
1 Colors

consult the portfolio for the range of colors, fabrics, eco-leather, soft-leather.

use and maintenance instructions

Clean all parts in wood, leather, fabric and metal with a damp cloth or a diluted neutral cleaner. Do not use cleaners with alcohol, bleach, solvent or abrasive products. Any liquid spilt on the product must be wiped up immediately. When lifting or moving the product, hold it on the structure and not under the seat. The product should not be subjected to unbalanced weights, as it is designed for a proper rest on the foothold (on four legs or on the base). Our company relieves from any responsibility in case of damage caused to fragile floors. Avoid any improper use of the product: do not step on the product, on the footrest or on the armrests. Avoid any movements that could compromise the proper functionality of the product or the safety of the users. Wood and leather, being natural materials, could be easily damaged. Small impurities or imperfections are within quality standard range. Do not expose the product to weather conditions or atmospheric agents, nor to heat sources over 40°C. Also products for outdoor use could be afflicted by atmospheric agents. The product could undergo possible exterior changes due to particular exposure to heat, humidity and saltiness. An appropriate and frequent maintenance and cleaning of the product enhances its durability. The product could change colour and shade, if exposed to direct sunlight. Maintenance has to be carried out by experienced staff. Dispose of the package only after assembling the product, in order to avoid the loss of ironmongery and components. Once the product has been dismantled, the product itself or its components must be given to the public garbage disposal system, according to the legislation in force.

De Projectinrichter

www.deprojectinrichter.com

088 - 650 12 34