

Forest Table

design Beatriz Sempere, 2017

Fixed table with base in lacquered steel available in different sizes. Top in crystalceramic or solid wood.

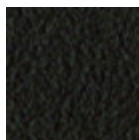
Solid wood top available for the 200x106 (78.7x41.7 in) cm and 250x106 cm (98.4x41.7 in) versions.

Rectangular top with rounded corners for the 250x120 cm (98.4x47.2 in) with possibility to match a veneered wood top.

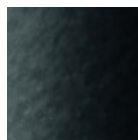


Colors and Materials

Structure

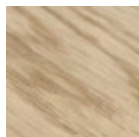


Brown Steel



Black Seel

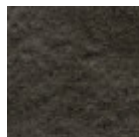
Coating



Solid Oak straight edge



Solid Walnut bark edge



Charcoal Savoia Crystalceramic



Crystalceramic with effect calacatta marble

1 color



Veneered Flamed Walnut

Dimensions



	A (cm) (inch)	B (cm) (inch)	C (cm) (inch)
200x106 (cm) (inch)	75 29.5	200 78.7	106 41.7
250x106 (cm) (inch)	75 29.5	250 98.4	106 41.7

	A (cm)	B (cm)	C (cm)
	(inch)	(inch)	(inch)
250x120	75	250	120
(cm)	29.5	98.4	47.2
(inch)			

Volumetric Details

Weight 169 Kg

Volume 1.55 mc

Package 4

Materials Certifications

Solid Oak straight edge

FEATURES AND PLUS

Solid wood tops are obtained from the trunk of the tree, in particular from the heartwood, or the inner part (the less young one). Each top has unique characteristics in terms of veins and knots due to the natural origin of the material. To reach the widths necessary for the realization of a top for domestic use, several floorboards/strips are joined together in an effort to maintain the greater possible uniformity.

MAINTENANCE

For the regular cleaning schedule of Solid woos tops, use a wet sponge with mild soap diluted in water or specific products. Dry after each application with a cloth or absorbent paper. Do not use abrasive products. In case of accidental release of liquid substances, dab immediately the surface with absorbent paper or a dry, clean cloth. Avoid proximity to heat sources. Expose the solid wood surfaces to light, for example by opening periodically the extensions of the tables that are placed inside the structures, or by moving any objects such as vases and accessories generally resting on the top.

MIDJ
INITALY

Forest oval Table

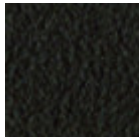
design Beatriz Sempere, 2017

Fixed table with lacquered steel base. Top in veneered wood or crystalceramic.



Colors and Materials

Structure



Brown Steel



Black Steel

Coating



Veneered Flamed
Walnut



Black Lacquered
Veneered Wood



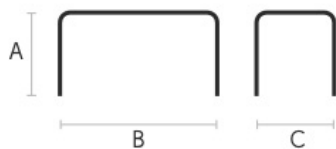
Charcoal Savoia
Crystalceramic



Crystalceramic with
effect calacatta
marble

1 color

Dimensions



	cm	inch
A	75	29.9
B	280	110,3
C	120	47.2

Volumetric Details

Weight 137 Kg
Volume 1.65 mc
Package 4

MIDJ
INITALY

Forest ø150 Table

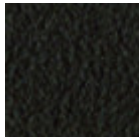
design Beatriz Sempere, 2017

Fixed table with lacquered steel base. Top in veneered wood or crystalceramic.



Colors and Materials

Structure

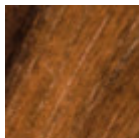


Brown Steel

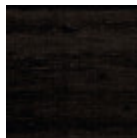


Black Steel

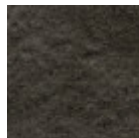
Coating



Veneered Flamed
Walnut



Black Lacquered
Veneered Wood



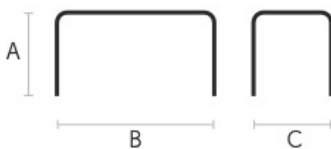
Charcoal Savoia
Crystalceramic



Crystalceramic with
effect calacatta
marble

1 color

Dimensions



A (cm) **B (cm)** **C (cm)**
(inch) (inch) (inch)

ø150	75	150	150
(cm)	29.5	59.1	59.1
(inch)			

Volumetric Details

Weight 108 Kg
Volume 1.17 mc
Package 4